

**THE CROCODILE – Maximum degree of drainage
with minimum energy expenditure**





1
Operating display panel with function keys. Seven application programs can be adapted, as required, to a wide range of materials.



2
To ensure maximum operational safety, only high-quality components from reputable manufacturers are integrated in the control cabinet.



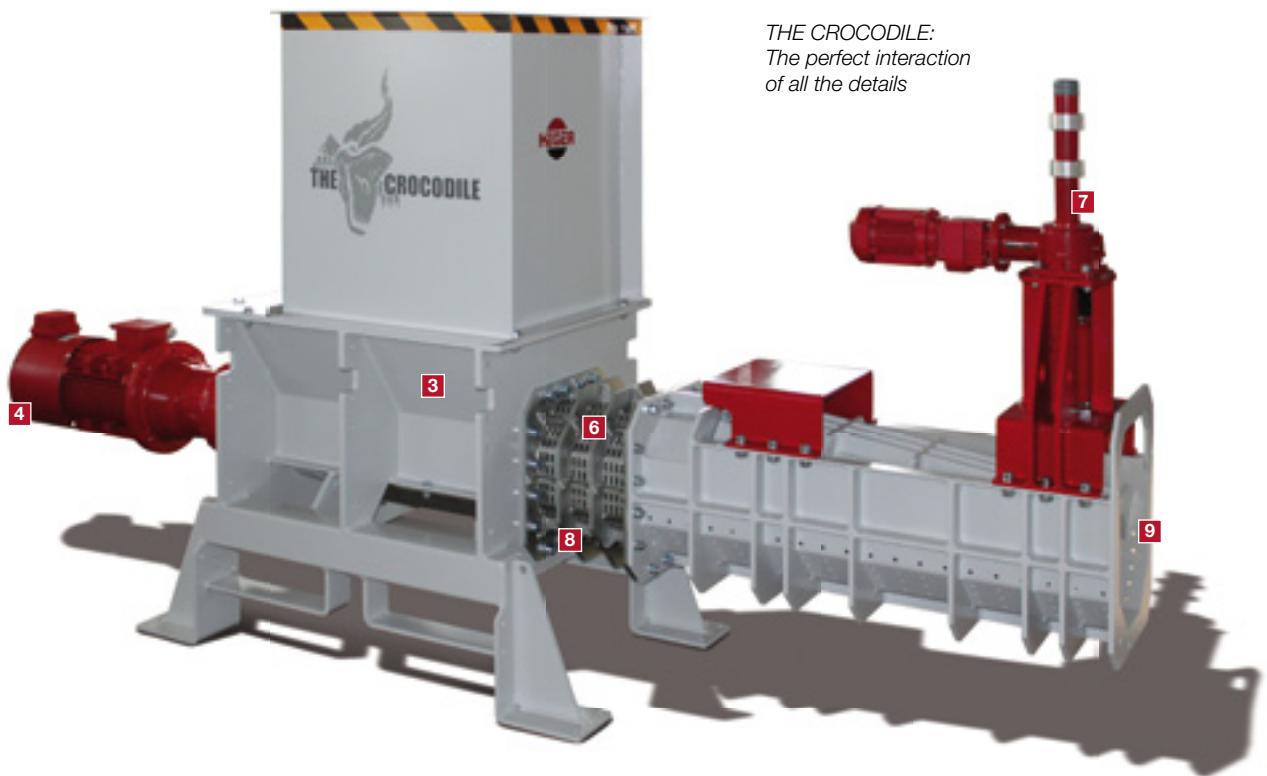
3
The horizontally set screw compresses the solid matter contained in the material fed in the compaction channel. In the process, free-flowing materials are separated from the solids content by a perforated screen cylinder.



4
A robust drive engineering ensures optimal machine performance.



5
High service life of the pressing screw by application-specific front screw segment hard-facing.

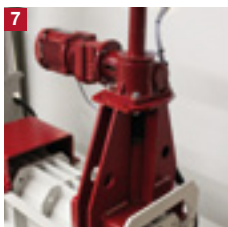


THE CROCODILE:
The perfect interaction of all the details

The drainage channel made of stainless steel is available in various hole sizes and installation lengths.



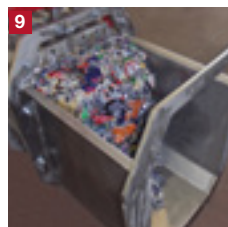
Fully automatic pressure regulation with lifting spindle driven by electric motor.



The squeezed-out liquid discharges from the lower side of the drainage pipe and can be collected in a trough and pumped off.



The compressed and drained solids content is ejected from the channel end of the machine.



Powerful. Reliable. Safe.

Drained material is easier to process or recycle. THE CROCODILE range of Heger drainage systems are used for solid/liquid separation and the removal of residual liquids from waste products.

THE CROCODILE drains out free-flowing contents from plastic cups, Tetra Pak® packaging, cans or PET bottles, drains sewage sludge and industrial waste and assumes drainage tasks in industrial plastic processing. The reduction in weight as a result of draining enables considerable cost savings in disposing of materials at landfill sites. The drained material can often be disposed of in incinerators.

Technical features

- Optimal drainage results thanks to a performance-oriented machine concept
- Long service life and operational safety thanks to a robust engineering drive
- Powerful and low wear thanks to hard-facing screw segments
- Fully automatic pressure regulator (no hydraulics or pneumatics)
- Expandable with special accessories, such as collection troughs, thrust channels or feeding systems
- Comfortable operation thanks to state-of-the-art SPS control
- Highly efficient thanks to low operating and maintenance costs
- Simple commissioning thanks to plug-in delivery
- CE labelling



THE CROCODILE - Strong with a wide range of uses. The modular machine concept enables optimal adaptation to the most diverse drainage tasks.



THE CROCODILE 250 T 100% stainless steel system at work: Squeezing out of liquid biomass from crushed food packaging. The drained solids content is energetically utilised in incinerator plants.

Technical data

Size / Variants	Throughput (m³/h)	Achievable residual liquid (%)	Volume of processable parts (litres)	Standard hole size (mm)	Channel cross-section (mm)
CROCODILE 200	1-2	10 - 30	0,33	3,0 (5,0)	210 x 210
CROCODILE 250	3-5	10 - 30	1,0	3,0 (5,0)	290 x 290
CROCODILE 300	4-8	10 - 30	1,5	3,0 (5,0)	320 x 320
CROCODILE 400	5-10	10 - 30	2,5	3,0 (5,0)	400 x 400



Disposal companies



Disposal companies



Dairies



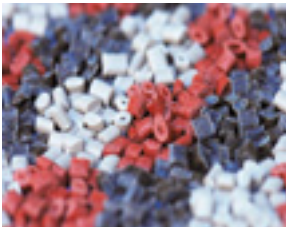
Breweries



Beverage manufacturers



Paper industry



Plastics industry



Sewage treatment plants

Experience in the trade

Disposal companies

- Separation of free-flowing components from packaging
- Compression of PET bottles, aluminium cans and tin cans
- Draining of food waste

Beverage industry

- Separation of liquids from PET bottles, Tetra-Pak®, aluminium cans, tin cans

Dairies

- Separation of liquid or free-flowing components from plastic cups, Tetra-Pak®, PET bottles

Breweries

- Separation of liquids from cans

Paper industry

- Draining of paper sludge

Plastics industry

- Draining / Drying of washed PE foil cuttings

Sewage treatment plants

- Draining of sewage treatment plants